

Wildlife to spot at Blaise



Raven



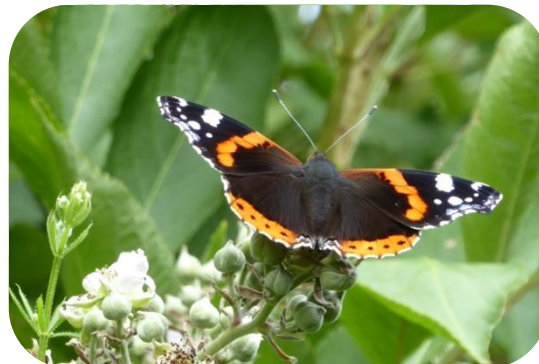
Horse-chestnut



Grey Squirrel



Old Man's Beard



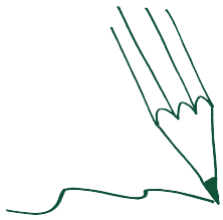
Red Admiral



Hart's-tongue Fern

Share your discoveries at recording.brerc.org.uk





Become a wildlife recorder

Tell us who, what, where and when

What did you spot?	Where did you spot it?	When did you spot it? (date)

Who spotted it? Contact details for your adult	
Name:	
Address:	
Tel no:	Email:

Please return this form to the museum or post to
 Bristol Regional Environmental Records Centre (BRERC),
 Blaise Museum, Henbury Road, Bristol, BS10 7QS

Alternatively you can enter records online at
recording.brerc.org.uk
 or email records@brerc.org.uk



Records provided to BRERC are deemed to be made available for BRERC to use in accordance with its role as a Local Environmental Records Centre for Bristol, South Gloucestershire, North Somerset and Bath and North East Somerset. As such, records may be distributed by BRERC to third parties, in a variety of formats and media, such as through the National Biodiversity Network Atlas and other websites. Personal information is not supplied by BRERC to data enquirers and names are blanked out on copies of records and reports sent to them. Privacy notice: www.brerc.org.uk/privacy-notice.htm